

Frequently Asked Questions (FAQ)

RaceCore24 Brake Mod

How and why does the Brake Mod work?

See “Master Theory Brake Mod Resolution Effect” document under Products on www.racecore24.com.

How and why do we need to calibrate the Brake Mod controller?

The Brake Mod uses a 23-bit analog to digital converter. In order for the input pedal force to be accurately mapped to game input value, we need to set zero and maximum pedal value. All values to game input will be between – and including – these values.

There are 3 ways to calibrate your controller. Two ways to calibrate minimum pedal force and one way to calibrate maximum pedal force. You do not need to calibrate both types of minimum pedal force. Just one will suffice. The calibration dialog looks like this:

Calibration of Brake

Minimum (Custom) Minimum (45 sec) Maximum (5 sec)

Please enter value for minimum calibration, then press 'Calibrate'.

- Current Minimum: 0

- Current Maximum: 8,388,607

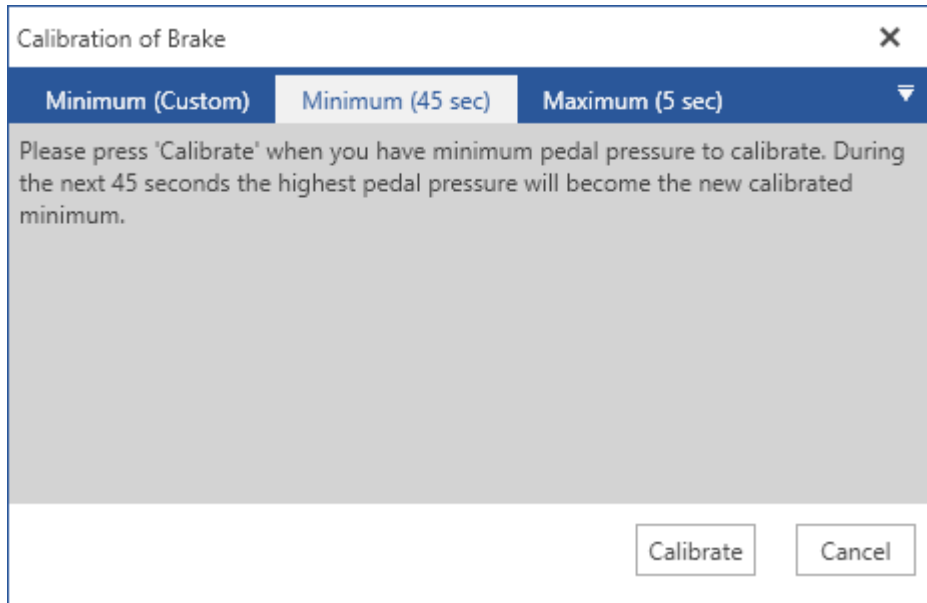
- Current Sensor Value: 0

New (Custom) Minimum: 0

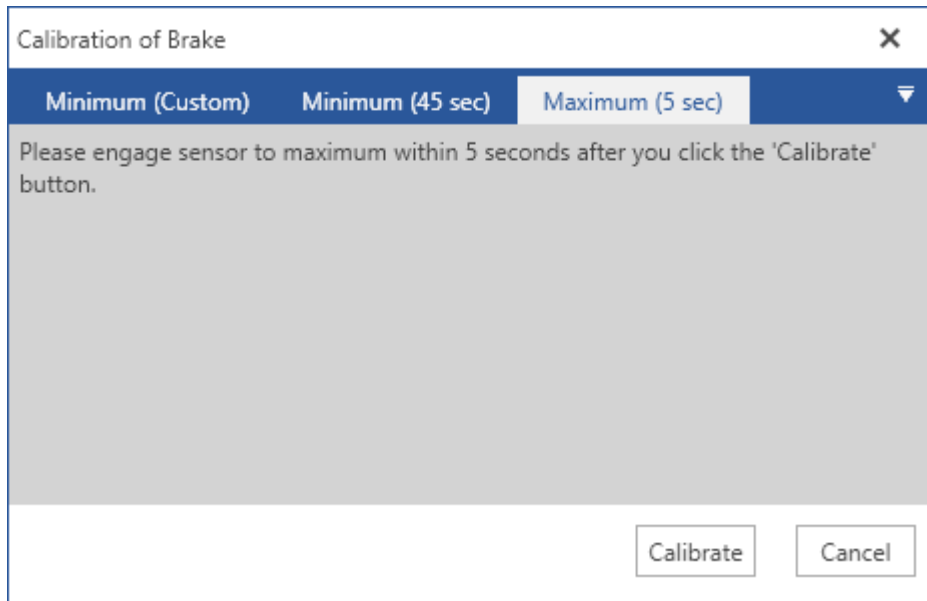
Warning! Minimum sensor value must never exceed, or equal, Maximum sensor value.

Calibrate Cancel

With “Minimum (Custom)” calibration, you can set the minimum pedal value directly in the “New (Custom) Minimum” field. Click calibrate when you have chosen a value. If the sensor value never jumps above zero you can leave or set it to zero.



With “Minimum (45 sec)” calibration, you let the controller decide what will be the new minimum value. It does this by sensing the maximum pedal pressure in a 45 second window. Do not press the brake pedal after you have clicked calibrate – during this time window. This is a useful calibration when there is some noise or wiggling of sensor value.

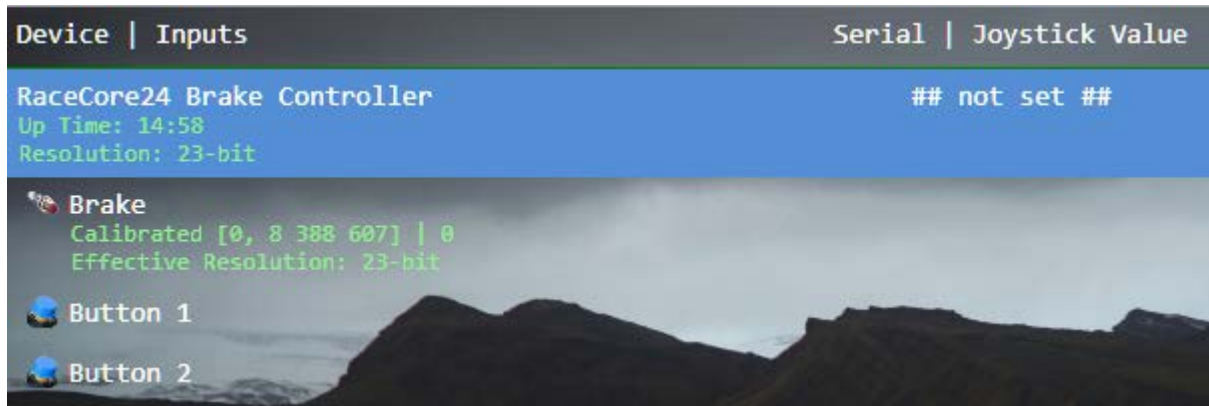


With “Maximum (5 sec)” calibration, you let the controller decide the maximum pedal pressure value. It does this by sensing the maximum pedal pressure in a 5 second window. Press the pedal with maximum braking force during these 5 seconds.

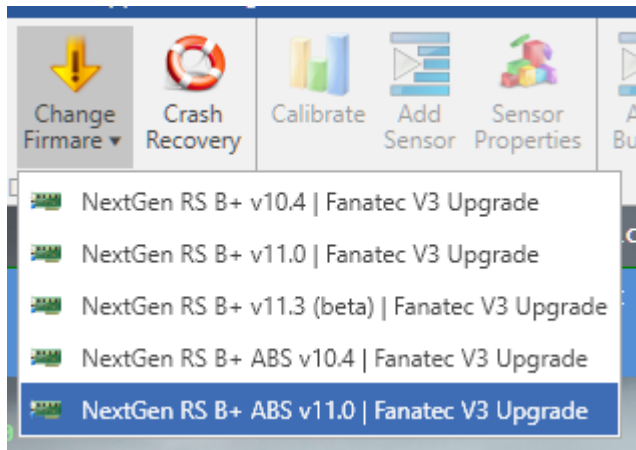
How do I enable ABS braking?

There are two ways. 1) For firmware version before 11.3, you would change firmware to an abs firmware. 2) For firmware version 11.3 and higher you set the sensor to use – or not use – abs in the sensor properties dialog.

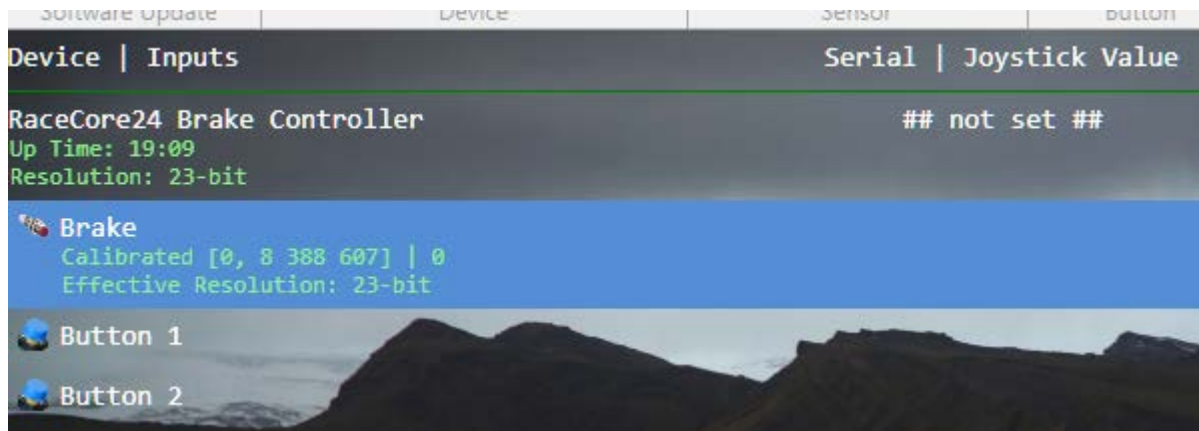
For 1) you select the RaceCore24 Controller like this:



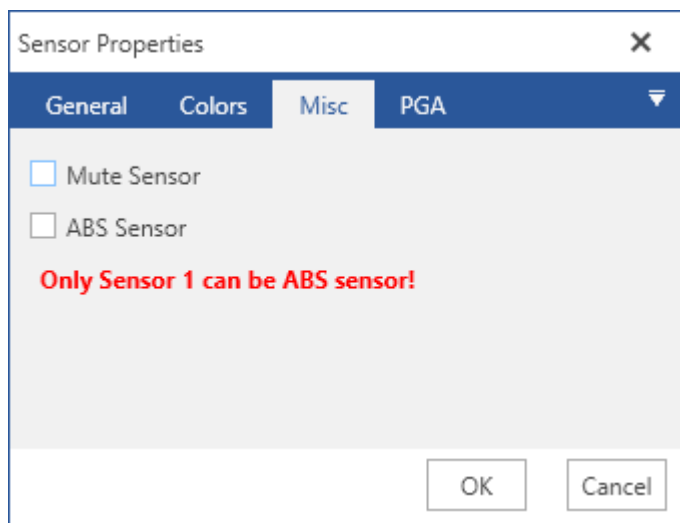
Then you choose what firmware you wish to change to by clicking “Change Firmware” in the ribbon. Remember to choose an ABS firmware. Something like this:



For 2) you select the sensor like this:



Then you click the "Sensor Properties" in the ribbon and choose the "Misc" tab like so:



Check or uncheck "ABS Sensor" and click OK to set the abs.